

Page Number One
999 Standards Way
Cooperativeville, UN 00000

Mr. K.D. Sang
333 Good Fortune Avenue
Exploration Point, UN 11111

Dear Mr. Sang,

International Standards and their development process support:

- facilitation of global trade,
- improvement of quality, safety security, environmental and consumer protection, as well as the rational use of natural resources,
- global dissemination of technologies and good practices,

all of which contribute to economic and social progress.

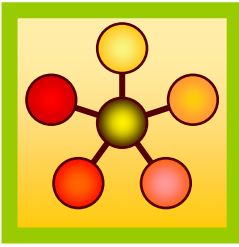
Through the network and collaboration of national member bodies, international liaisons, industry consortia, and dedicated experts, the international standards bodies constitute a leading platform for the production of global, market relevant international standards.

The consensus-building mechanisms employed in the development of these international standards are recognized and relied upon by industry, public authorities, consumers, and other stakeholders, thus helping to accomplish the aim of “one standard, one test, and one conformity assessment procedure accepted everywhere.”

In this way, international standards organizations and their standards products contribute to a more efficient and sustainable world economy.

Sincerely,

Jane Smith



Page Number Two
999 Standards Way
Cooperativeville, UN 00000

Mr. K.D. Sang
333 Good Fortune Avenue
Exploration Point, UN 11111

Dear Mr. Sang,

Thank you for your interest in our programs and services. Here is the information you requested on the topic of:

- Global dissemination of technologies and good practices.

We are offering the following training this year. Perhaps one of these locations will be convenient for you.

DATE	LOCATION
March 5-7	Hong Kong
April 12-15	Tokyo
May 23-25	Berlin
June 1-3	Seattle
July 9-10	New York
August 18-19	London
September 28-30	Rio de Janeiro
October 15-17	Cape Town

Please let me know which of these sessions is convenient and how many of your team will be attending.

Sincerely,

Jane Smith



Page Number Three
333 Good Fortune Avenue
Exploration Point, UN 11111

Ms. Jane Smith
999 Standards Way
Cooperativeville, UN 00000

Dear Ms. Smith,

Please accept my appreciation of your hard work in the area of international standards. It is apparent to me that such work is of significant long term value in the areas of

- global trade,
- product quality, product safety,
- and especially environmental and consumer protection.

I am particularly interested in learning more about ways in which standards can help me learn more about technologies and good practices from around the world that may be helpful in my business.

Does your organization provide training in this matter?

Sincerely,

K.D. Sang



Page Number Four
333 Good Fortune Avenue
Exploration Point, UN 11111

Ms. Jane Smith
999 Standards Way
Cooperativeville, UN 00000

Dear Ms. Smith,

I much appreciate the range of location and timing options that you are able to provide.

For the purpose of this training I believe the location in Cape Town in October will work out well given that I already have other business travel in the region around that time.

For this initial inquiry I will not involve the rest of my team. That may be an option at a later time.

Please provide the details for accommodations, flights, training costs, etc., for this Cape Town session.

I am looking forward to meeting you with pleasure.

Sincerely,

K.D. Sang

Color Tutorial Topics

What is encoded 'in' image code values?
...Image state explained

When to encode for print?
...Early binding vs. late binding workflows

Why doesn't "perfect" math always yield
a usable profile or desirable imaging
result?
...Color processing computational quality

How are white point, black point, and
gamut extent rendered or re-rendered?
...Essentials of color management

Color preference vs. color matching?
...Building rendering intent transforms

Re-rendering to another output?
...Device to device profile construction
for interoperability



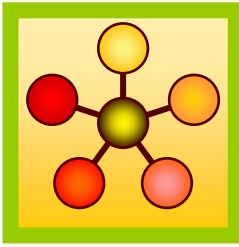
*Understand how to take and preserve
great photos!*

Give and take:

"From the trenches" expert user Q&A:
Color managed use case examples from
creative and prepress workflows
Audience recommendations on future
directions for color management

Wine & Cheese Networking Event:
Products and Applications — Industry
Color Management Demonstrations

See You There!!!



Ms. Jane Smith
999 Standards Way
Cooperativeville, UN 00000

Mr. K.D. Sang
333 Good Fortune Avenue
Exploration Point, UN 11111

Dear Mr. Sang,

International Standards and their development process support:

- facilitation of global trade,
- improvement of quality, safety security, environmental and consumer protection, as well as the rational use of natural resources,
- global dissemination of technologies and good practices,

all of which contribute to economic and social progress.

Through the network and collaboration of national member bodies, international liaisons, industry consortia, and dedicated experts, the international standards bodies constitute a leading platform for the production of global, market relevant international standards.

The consensus-building mechanisms employed in the development of these international standards are recognized and relied upon by industry, public authorities, consumers, and other stakeholders, thus helping to accomplish the aim of “one standard, one test, and one conformity assessment procedure accepted everywhere.”

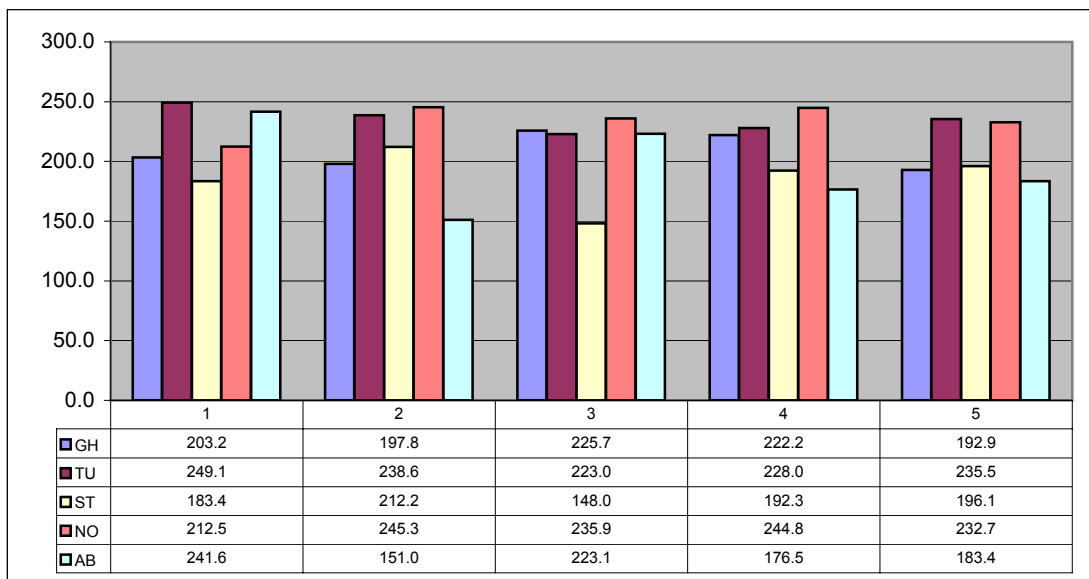
In this way, international standards organizations and their standards products contribute to a more efficient and sustainable world economy.

Sincerely,

Jane Smith

Summary Sheet Version 3.2
Intermediate Results
Final Report finished by time of final reporting.

	EU	NA/SA	LA	Asia	AF/AU	EUE	NW	SW	ME	SE	MW	IST
First	99.0	17.6	51.9	112.2	142.9	10.4	199.1	6.6	173.0	178.0	153.4	124.5
Second	153.2	147.8	126.6	143.6	121.4	138.4	50.9	188.6	139.0	45.5	32.3	133.4
	Y	M	T	Z	O	I	R	Q	L	C	P	G
Third	32.5	57.3	175.7	91.4	84.0	56.6	163.1	67.5	85.4	53.5	185.5	29.0
Fourth	46.7	93.7	24.2	172.2	47.9	132.6	26.7	128.9	163.1	103.9	162.3	55.6
Estimate:	203.2	197.8	225.7	222.2	192.9	188.4	249.1	238.6	223.0	228.0	235.5	183.4



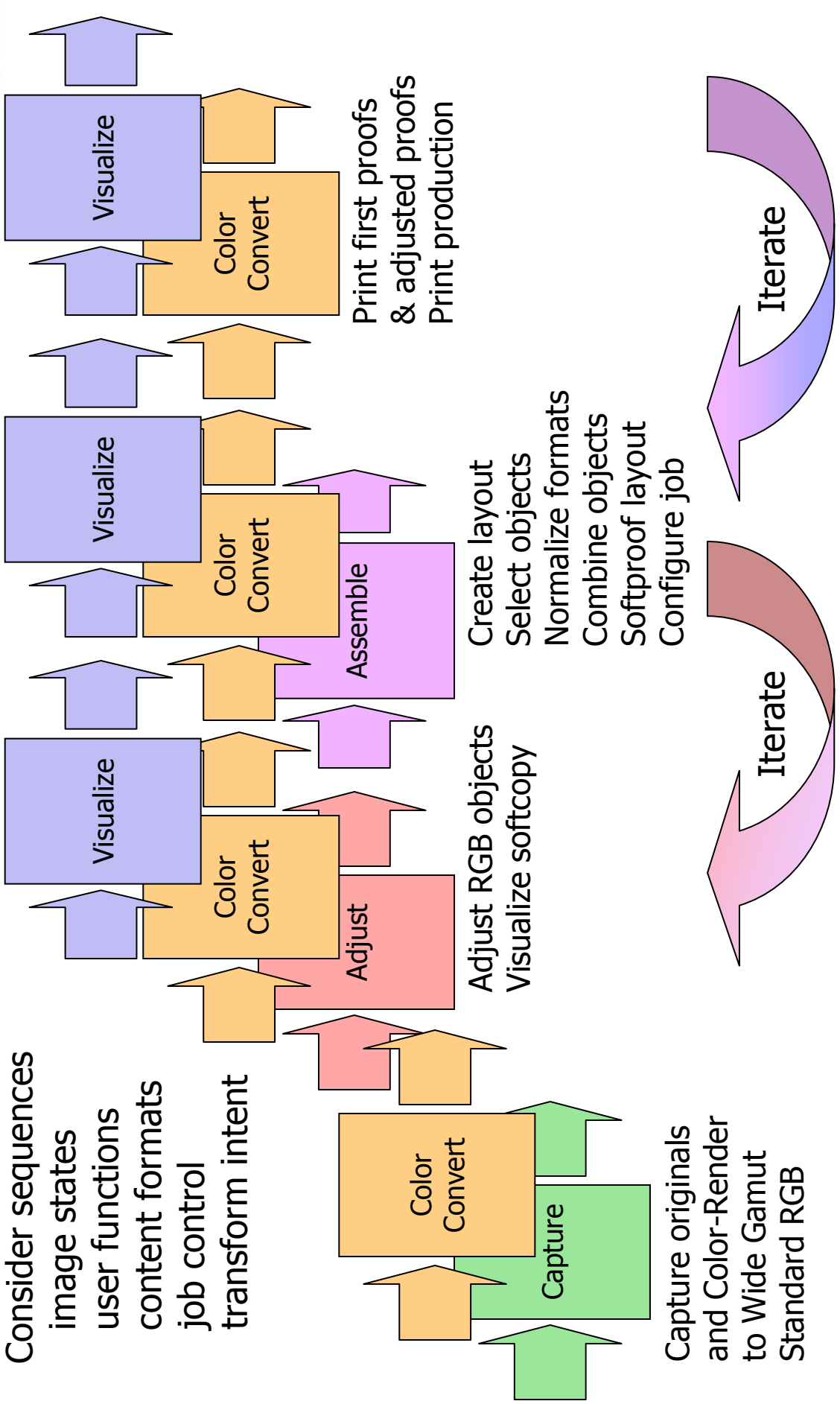
	EU	NA/SA	LA	Asia	AF/AU	EUE	NW	SW	ME	SE	MW	IST
Ein	158.5	98.0	84.8	146.1	186.0	114.9	20.9	168.6	155.8	174.7	191.6	35.0
	P	G	T	O	Z	I	R	Q	L	C	Y	M
Zwei	88.1	12.1	69.5	119.6	99.2	162.5	90.6	106.2	194.8	79.6	160.5	31.0
Drie	79.7	6.0	93.8	13.6	178.5	33.5	195.3	32.6	75.6	136.3	43.2	15.2
	I	R	O	T	Z	P	G	C	L	Q	M	Y
Funf	162.2	67.9	142.3	117.5	31.1	73.1	156.0	38.8	47.4	182.7	25.9	74.6
Vier	34.5	79.3	44.4	144.7	64.5	132.4	85.5	185.9	117.7	117.7	22.1	101.0
Estimate:	212.2	148.0	192.3	196.1	236.0	212.5	245.3	235.9	244.8	232.7	241.6	151.0

	EU	NA/SA	LA	Asia	AF/AU	EUE	NW	SW	ME	SE	MW	IST
	56.3	196.4	194.7	590.1	287.5	189.4	5.0	186.1	360.9	254.0	528.6	396.0
Total	415.4	345.8	418.0	418.3	428.8	400.9	494.4	474.5	467.8	460.7	477.1	334.4

Last Update: April 2006
of Regions: 11.0

Workflow Primitives

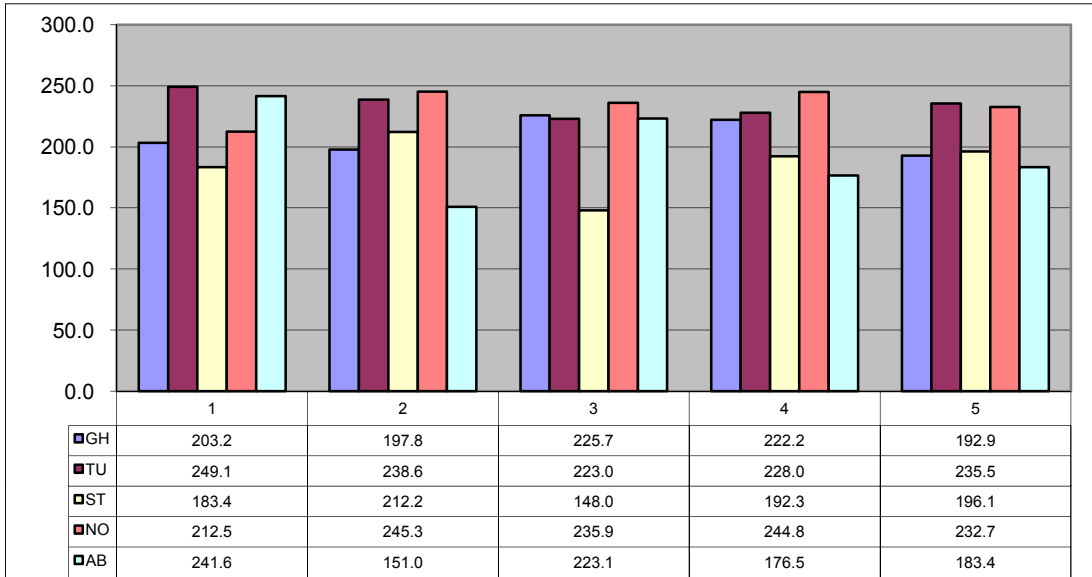
- Consider sequences
- image states
- user functions
- content formats
- job control
- transform intent



Capture originals and Color-Render to Wide Gamut Standard RGB

Summary Sheet Version 3.2
Intermediate Results
Final Report finished by time of final reporting.

	EU	NA/SA	LA	Asia	AF/AU	EUE	NW	SW	ME	SE	MW	IST
First	99.0	17.6	51.9	112.2	142.9	10.4	199.1	6.6	173.0	178.0	153.4	124.5
Second	153.2	147.8	126.6	143.6	121.4	138.4	50.9	188.6	139.0	45.5	32.3	133.4
	Y	M	T	Z	O	I	R	Q	L	C	P	G
Third	32.5	57.3	175.7	91.4	84.0	56.6	163.1	67.5	85.4	53.5	185.5	29.0
Fourth	46.7	93.7	24.2	172.2	47.9	132.6	26.7	128.9	163.1	103.9	162.3	55.6
Estimate:	203.2	197.8	225.7	222.2	192.9	188.4	249.1	238.6	223.0	228.0	235.5	183.4



	EU	NA/SA	LA	Asia	AF/AU	EUE	NW	SW	ME	SE	MW	IST
Ein	158.5	98.0	84.8	146.1	186.0	114.9	20.9	168.6	155.8	174.7	191.6	35.0
	P	G	T	O	Z	I	R	Q	L	C	Y	M
Zwei	88.1	12.1	69.5	119.6	99.2	162.5	90.6	106.2	194.8	79.6	160.5	31.0
Drie	79.7	6.0	93.8	13.6	178.5	33.5	195.3	32.6	75.6	136.3	43.2	15.2
	I	R	O	T	Z	P	G	C	L	Q	M	Y
Funf	162.2	67.9	142.3	117.5	31.1	73.1	156.0	38.8	47.4	182.7	25.9	74.6
Vier	34.5	79.3	44.4	144.7	64.5	132.4	85.5	185.9	117.7	117.7	22.1	101.0
Estimate:	212.2	148.0	192.3	196.1	236.0	212.5	245.3	235.9	244.8	232.7	241.6	151.0

	EU	NA/SA	LA	Asia	AF/AU	EUE	NW	SW	ME	SE	MW	IST
	56.3	196.4	194.7	590.1	287.5	189.4	5.0	186.1	360.9	254.0	528.6	396.0
Total	415.4	345.8	418.0	418.3	428.8	400.9	494.4	474.5	467.8	460.7	477.1	334.4

Last Update: April 2006
of Regions: 11.0

Next Actions Version 3.2

Reported by quarterly reporting.

Final Report finished by time of final reporting.

	EU	NA/SA	LA	Asia	AF/AU	EUE	NW	SW
	424.3743	563.98315	401.129	492.50801	11.19227	84.772662	555.649	438.34586
A	190.9526	18631.176	116.5339	8591.0855	98.10309	120701.3	MISSING	19608.34
B	101.8873	71532.948	MISSING	124007.57	MISSING	67172.996	84.56548	50251.747
C	180.2671	118108.92	14.98779	193151.27	11.27918	19852.249	MISSING	137807.65
D	139.3896	105857.01	145.1031	171174.94	MISSING	30164.606	81.11001	67105.501
SUM	612.4966	314130.05	276.6248	496924.87	109.3823	237891.15	165.6755	274773.24

	EU	NA/SA	LA	Asia	AF/AU	EUE	NW	SW
	142.9192	116.93851	18.12529	111.34752	453.4572	379.92913	417.4005	452.94124
E	61.07649	13398.067	73.25868	64566.801	156.175	102595.76	79.41512	147484.59
F	63.83739	32074.067	29.70185	32524.01	74.23604	67321.102	89.84289	66453.307
G	43.19256	141993.14	197.3873	130850.32	8.552665	175947.96	56.30075	55217.104
H	131.4316	201204.74	159.7605	142155.53	132.7276	72093.69	127.7572	12398.592
SUM	299.538	388670.02	460.1083	370096.66	371.6914	417958.52	353.3159	281553.59

	EU	NA/SA	LA	Asia	AF/AU	EUE	NW	SW
	43.92654	243.04201	72.855	461.68412	142.7361	167.17851	118.5119	92.389645
I	39.63489	185328.42	99.84612	130153.57	91.79929	186717.08	41.58004	
J	197.0853	125938.55	184.1545	MISSING	103.882	79217.282	85.81268	167343.41
K	162.1129	MISSING	104.0659	91467.195	49.63895	64751.543	151.2103	34111.968
	443.0125	66.785365	63.74506	358.08241	251.6232	127.13942	113.7752	317.92277
L	34.9803	1643940.1	126.7982	1409789.8	195.4407	479890.58	61.18226	776102.44
M	MISSING	1542605.3	MISSING	2696844.5	MISSING	2689468.6	MISSING	775739.32
SUM	433.8134	3497812.4	514.8647	4328255.1	440.761	3500045.1	339.7853	1753297.1

	EU	NA/SA	LA	Asia	AF/AU	EUE	NW	SW
	427.0688	514.82959	29.02763	476.31445	472.6003	275.30569	143.3599	169.70087
Total	1345.848	4200612.5	1251.598	5195276.6	921.8346	4155894.7	858.7767	2309624

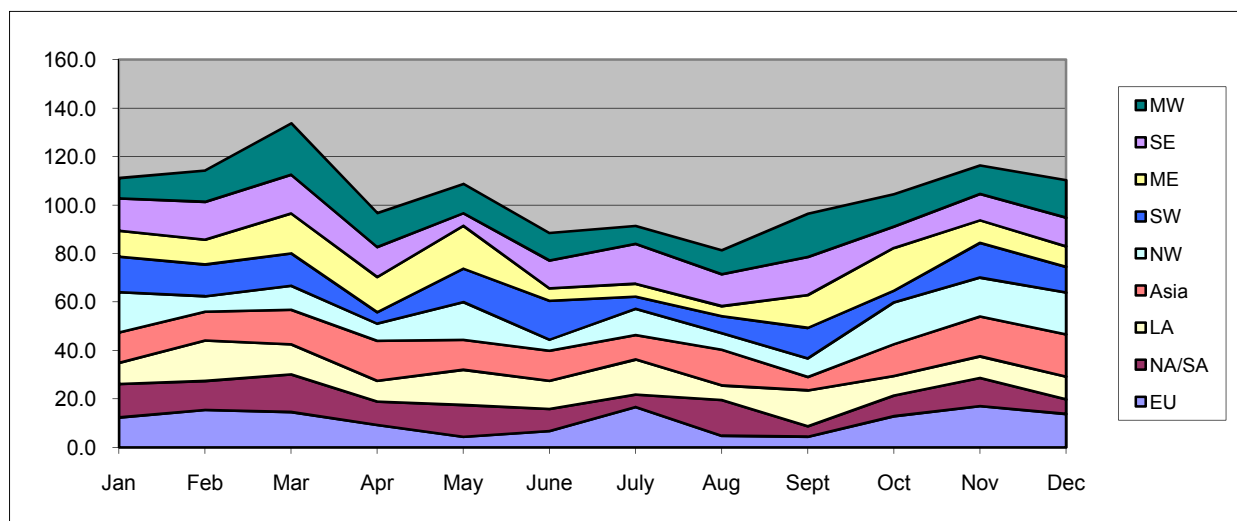
Tracking Sheet Version 3.3
Aggregated results reported by month.

Year 01	Jan	Feb	Mar	Apr	May	June	July	Aug	Sept	Oct	Nov	Dec
WEU	14.4	15.2	14.8	5.7	11.4	11.1	9.3	17.4	15.8	9.2	11.7	16.2
NA/SA	6.6	12.3	9.1	8.9	11.4	17.9	4.2	17.4	17.5	17.8	8.8	15.1
LA	5.8	16.8	5.2	7.7	4.5	7.7	6.1	14.0	13.3	10.1	10.6	16.5
Asia	14.5	12.4	9.1	11.0	8.2	12.4	13.1	12.1	7.2	17.9	14.1	12.6
NW	10.2	9.3	15.0	12.6	17.8	17.2	12.2	11.3	15.5	10.0	5.8	12.8
SW	14.1	4.7	5.2	16.8	18.0	7.6	7.0	6.5	16.3	7.2	7.1	5.6
ME	5.6	6.9	14.7	9.7	15.7	12.5	14.4	7.9	13.3	16.4	14.3	5.6
SE	11.7	8.4	8.3	5.8	9.4	14.1	5.4	16.5	7.4	13.3	12.6	11.0
MW	9.5	10.6	15.1	13.2	6.2	15.2	16.7	7.1	7.2	17.2	7.7	5.1

Total:	104	126	111	108	120	139	106	130	131	142	122	131
Average:	9.5	11.5	10.1	9.9	11.0	12.7	9.6	11.8	11.9	12.9	11.1	11.9
Minimum:	14.4	15.2	14.8	5.7	11.4	11.1	9.3	17.4	15.8	9.2	11.7	16.2
Maximum:	14.5	16.8	15.1	16.8	18.0	17.9	16.7	17.4	17.5	17.9	17.9	16.5

Year 02	Jan	Feb	Mar	Apr	May	June	July	Aug	Sept	Oct	Nov	Dec
EU	12.4	15.5	14.6	9.3	4.4	6.8	16.7	4.8	4.4	12.9	17.1	13.8
NA/SA	13.8	11.9	15.5	9.7	13.1	9.1	5.1	14.8	4.3	8.6	11.6	6.0
LA	8.8	16.7	12.5	8.5	14.5	11.6	14.5	6.0	14.9	8.0	8.9	9.4
Asia	12.5	11.9	14.2	16.5	12.4	12.4	10.1	14.8	5.5	13.1	16.4	17.5
NW	16.7	6.4	9.9	7.1	15.6	4.6	10.8	6.9	7.7	17.3	16.1	17.2
SW	14.7	13.1	13.3	4.7	13.8	16.1	5.0	6.9	12.6	4.8	14.3	10.6
ME	10.7	10.2	16.5	14.5	17.7	5.1	5.3	4.2	13.5	17.7	9.3	8.5
SE	13.3	15.6	16.0	12.4	5.1	11.5	16.5	13.2	15.7	8.8	10.8	11.8
MW	8.4	12.9	21.2	14.1	12.2	11.3	7.4	9.9	17.9	13.4	11.8	15.5

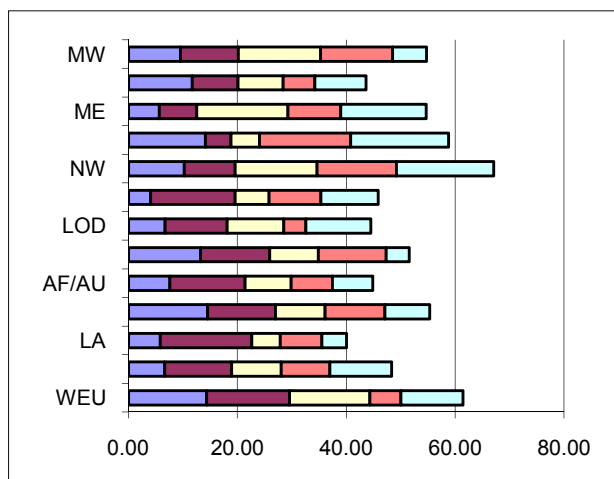
Total:	132	133	234	118	123	115	118	100	131	125	135	130
Average:	12.0	12.1	21.3	10.7	11.2	10.5	10.8	9.1	11.9	11.4	12.3	11.8
Minimum:	12.4	15.5	14.6	9.3	4.4	6.8	16.7	4.8	4.4	12.9	17.1	13.8
Maximum:	16.7	16.7	21.2	16.5	17.7	16.1	16.7	14.8	17.9	17.7	17.1	17.5



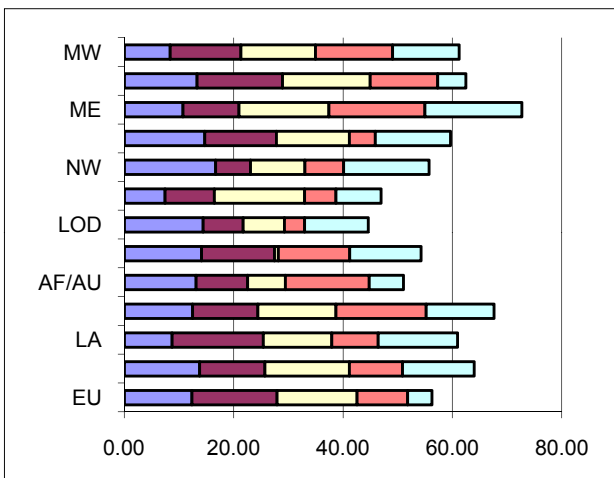
Last Update: April 2006

Data Sheet Version 3.3
Final data reported by month.

Year 01	Jan	Feb	Mar	Apr	May
WEU	14.37	15.19	14.79	5.68	11.41
NA/SA	6.64	12.28	9.13	8.94	11.35
LA	5.81	16.79	5.23	7.66	4.51
Asia	14.54	12.44	9.13	10.99	8.22
AF/AU	7.59	13.83	8.46	7.55	7.40
JIE	13.21	12.72	8.92	12.44	4.28
LOD	6.69	11.44	10.37	4.07	11.90
EUE	4.06	15.51	6.25	9.52	10.49
NW	10.24	9.32	15.05	14.60	17.84
SW	14.09	4.71	5.23	16.78	17.95
ME	5.63	6.91	16.74	9.71	15.69
SE	11.71	8.40	8.26	5.83	9.41
MW	9.53	10.63	15.11	13.20	6.22



Year 02	Jan	Feb	Mar	Apr	May
EU	12.38	15.51	14.63	9.29	4.40
NA/SA	13.76	11.93	15.47	9.66	13.13
LA	8.76	16.67	12.47	8.52	14.51
Asia	12.50	11.91	14.25	16.54	12.38
AF/AU	13.10	9.42	6.94	15.30	6.27
JIE	14.13	13.33	0.68	13.07	13.04
LOD	14.40	7.32	7.53	3.69	11.64
EUE	7.44	8.99	16.51	5.71	8.28
NW	16.69	6.39	9.95	7.07	15.57
SW	14.70	13.11	13.35	4.71	13.80
ME	10.70	10.25	16.47	17.55	17.70
SE	13.30	15.62	16.02	12.36	5.15
MW	8.38	12.92	13.65	14.07	12.15



Year 03	Jan	Feb	Mar	Apr	May
EU	14.07	17.00	8.56	15.98	10.56
NA/SA	9.52	4.48	15.51	5.21	11.53
LA	12.63	16.42	6.40	11.85	11.28
Asia	10.87	11.01	9.74	4.53	8.01
AF/AU	5.22	12.14	8.46	13.93	17.23
JIE	14.31	3.34	2.07	7.59	12.97
LOD	11.09	0.10	1.63	8.51	14.21
EUE	14.60	10.32	14.31	9.44	13.44
NW	9.39	6.16	7.76	13.54	14.28
SW	7.59	13.80	10.03	7.02	6.38
ME	15.49	15.68	4.07	4.83	15.05
SE	15.87	8.52	15.79	6.00	13.79
MW	15.19	12.43	7.48	9.27	14.01

